



HEALTHCARE INCLUSION PROGRAM FOR  
DEVELOPMENTAL DISORDERS

**I Feel Sick**

I need to visit a medical clinic at \_\_\_\_\_  
(where)

\_\_\_\_\_  
(when)

because I feel sick.

\_\_\_\_\_ will be with me.  
(who)





HEALTHCARE INCLUSION PROGRAM FOR  
DEVELOPMENTAL DISORDERS

## Waiting at the Medical Clinic

First, I have to wear a mask.



Then, I wait until a nurse calls my name.



HEALTHCARE INCLUSION PROGRAM FOR  
DEVELOPMENTAL DISORDERS

## What the Nurse Wears

The nurse wears a special mask, gown and gloves.

This is the nurse's uniform.





HEALTHCARE INCLUSION PROGRAM FOR  
DEVELOPMENTAL DISORDERS

## Going to the Test Room

First, I walk to the test room with the nurse.

Then, the nurse checks:

1. My blood pressure



2. My temperature



3. My oxygen level and heart rate



4. My breathing



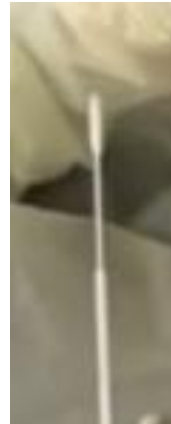


HEALTHCARE INCLUSION PROGRAM FOR  
DEVELOPMENTAL DISORDERS

## Getting a Nose Test

First, the nurse shows me the things she will use for a nose test.

The things are a cotton swab and a tube.





HEALTHCARE INCLUSION PROGRAM FOR  
DEVELOPMENTAL DISORDERS

Then, the nurse will do a nose test.

The nurse puts the swab in my nose.





HEALTHCARE INCLUSION PROGRAM FOR  
DEVELOPMENTAL DISORDERS

Then, the nurse takes the swab out of my nose.





HEALTHCARE INCLUSION PROGRAM FOR  
DEVELOPMENTAL DISORDERS

Then, the nurse puts the swab in the tube.



Then, I am finished.





HEALTHCARE INCLUSION PROGRAM FOR  
DEVELOPMENTAL DISORDERS

## Getting a Throat Test

The nurse might need to do a throat test.





HEALTHCARE INCLUSION PROGRAM FOR  
DEVELOPMENTAL DISORDERS

First, I open my mouth wide and stick out my tongue.

Then, the nurse rubs the swab on my throat.





HEALTHCARE INCLUSION PROGRAM FOR  
DEVELOPMENTAL DISORDERS

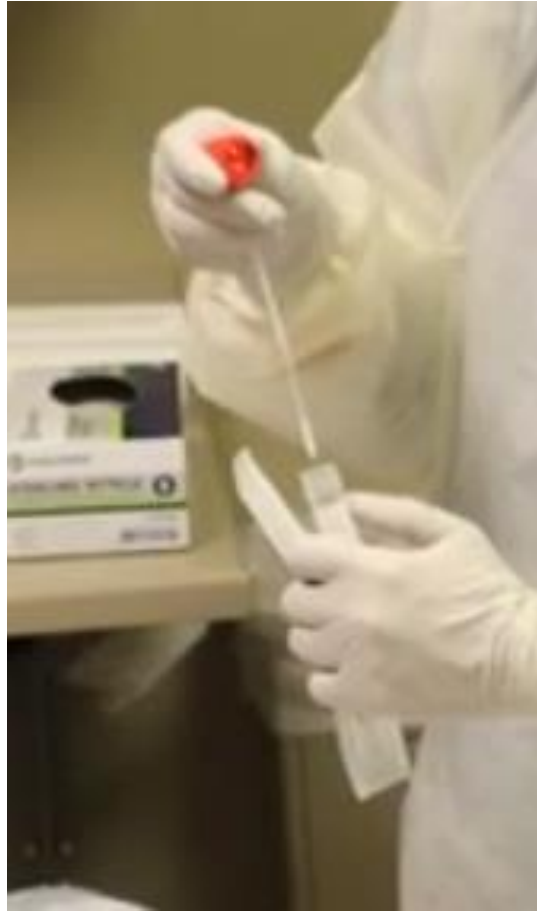
Then, the nurse takes the swab out of my throat.





HEALTHCARE INCLUSION PROGRAM FOR  
DEVELOPMENTAL DISORDERS

Then, the nurse puts the swab in the tube.



Then, I am finished.



HEALTHCARE INCLUSION PROGRAM FOR  
DEVELOPMENTAL DISORDERS

**My Test Results**

After I leave the medical clinic, the nurse will send the tubes to a lab.

The lab will test the swabs and my doctor will call \_\_\_\_\_ when it is ready.

(who)

I will learn the results \_\_\_\_\_.

(when)

I am finished.

Rev. 4/2020. Image courtesy of the Pixabay®. MassGeneral Hospital for Children and Massachusetts General Hospital do not endorse any of the brands listed on this handout. This handout is intended to provide health information so that you can be better informed. It is not a substitute for medical advice and should not be used to treatment of any medical conditions.

**Healthcare Inclusion Program  
For Developmental Disorders**

For more information please call

MassGeneral Hospital for Children  
55 Fruit St  
Boston, MA 02114

**888-644-3248**

www.massgeneralforchildren.org